

Preview of Moore County Board of Education 2019-2021 School Assignment Process

Pinecrest (Area 3) Community Forum
R.P. “Bob” Grimesey, Jr., Ed.D., Superintendent
February 26, 2019

Purpose of this Forum

- Provide information about the guiding principles, intentions, process and timeline.
- Build community understanding of the problems and challenges that require school assignment adjustment.
- Invite questions and clarify misunderstandings.
- Measure expectations and general perceptions.
- Identify worries and concerns.
- Gather input and ideas.
- Build community confidence and trust in process.

Four Guiding Principles

Balance – Utilization, program opportunities and student demographics.

Efficiency – Seek best benefit for students and community at lowest possible operational cost.

Planning – Apply most updated school and planning data with attention to current and future needs.

Community – Transparent process, community engagement and sensitivity to needs of students, families, communities and school district.

Guiding Principles / Limitations

- No intended priority among principles.
- Some principles may overlap.
- Some principles will conflict.
- Proposed plans will require compromise among principles.

Community Information Forums: Process Previews

- ✓ **6:00-7:30 p.m. Tuesday, February 19** – North Moore High School feeder area (Area 2) at Elise Middle School gymnasium.
- **6:00-7:30 p.m. Tonight, February 26** – Pinecrest High School feeder area (Area 3) at Southern Middle School multi-purpose room.
- **6:00-7:30 p.m. Thursday, March 7** – Union Pines High School feeder area (Area 1) at New Century Middle School multi-purpose room.

School Assignment Process: Timeline

- ✓ **February 4** School Board Work Session – Establish guiding principles, conduct needs assessment, approve process and timeline.
- **February-March** – Staff is currently working with advisory committee to develop first draft of school assignment plan.
- **April 1** School Board Work Session – Presentation of first draft of plan.
- **April 2 & 3** – Community input meetings at New Century and Southern middle schools.

School Assignment Process: Timeline

- **April** – Staff works with advisory committee to develop second draft of school assignment plan.
- **May 6** School Board Work Session - Presentation of second draft of plan.
- **May 7 & 8** - Community input meetings at New Century and Southern middle schools.
- **May-August** – Staff work with advisory committee to develop final draft to submit to superintendent.

School Assignment Process: Timeline

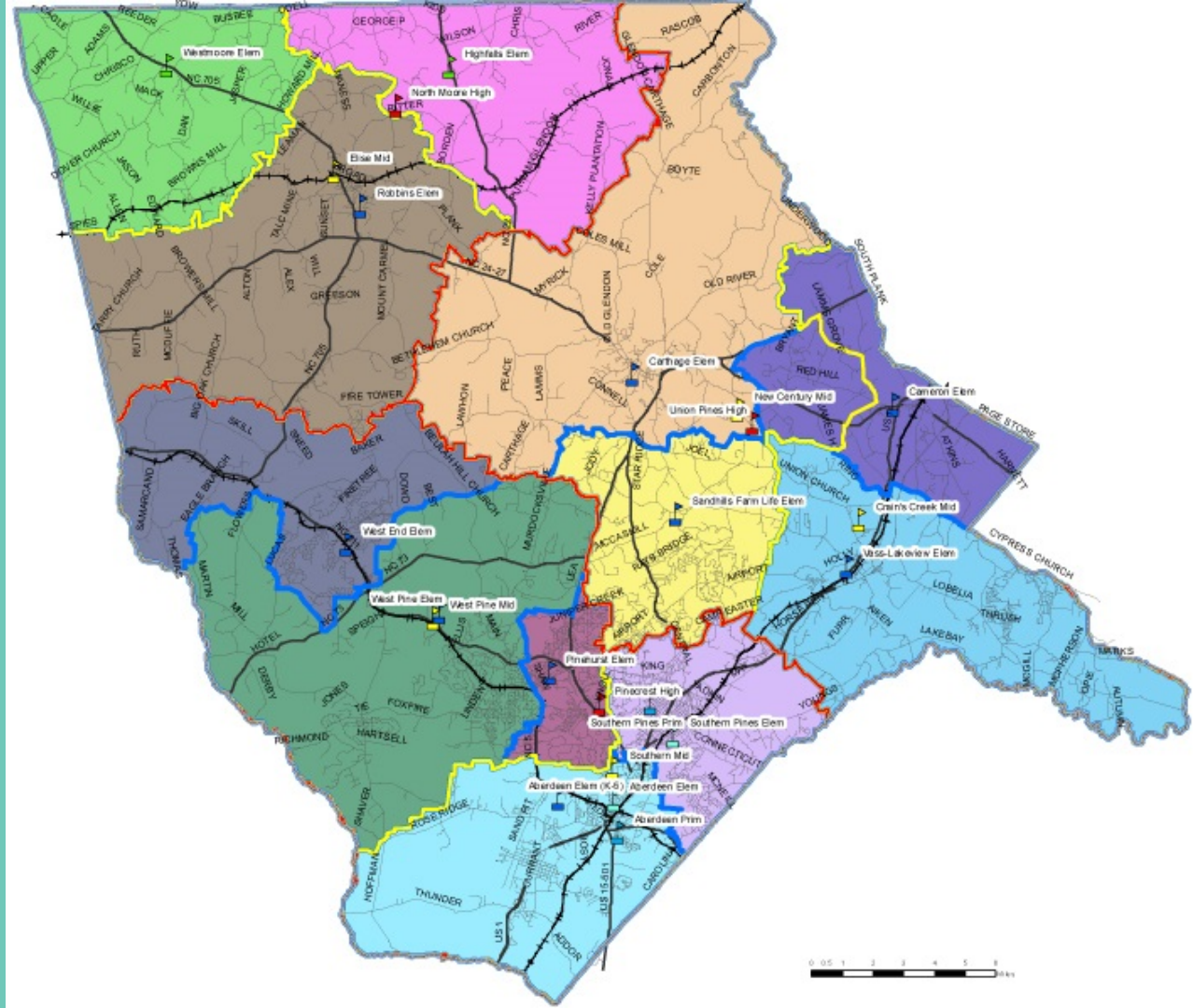
- **September 3** School Board Work Session – Presentation of superintendent’s multi-year student assignment plan.
- **Mid-September** – School Board Public Hearing to receive final public input on superintendent’s final draft plan.
- **October 7** School Board Work Session – School Board considers final draft plan and public input. Board determines what, if any, revisions it will make.
- **October 14** – School Board takes action on final multi-year student assignment plan.

School Assignment Process: Advisory Committee

- Membership will include district staff, consultants and a principal, teacher and parent from each school except high schools and Pinckney Academy. One team will represent Aberdeen Primary and Elementary and one team will represent Southern Pines Primary and Elementary since each pair will be consolidated in 2020-21.
- Sub-committees for each feeder area will be chaired by respective high school principal.
- Committee will participate in development of each of the three drafts of the plan.

Current Moore County School Assignment Areas

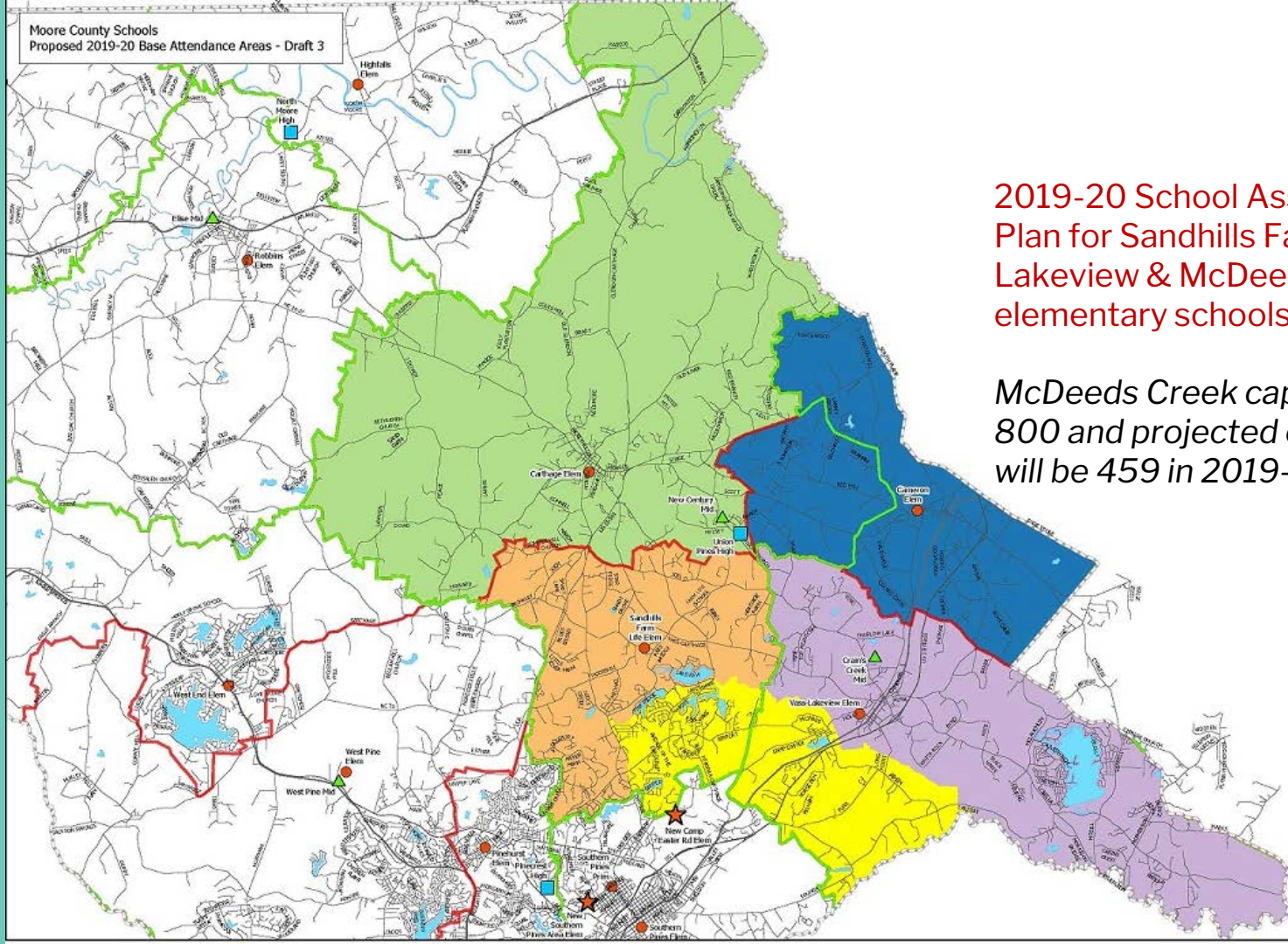
- Each color denotes an elementary school district.
- Yellow lines separate middle school districts.
- Red lines separate high school districts.



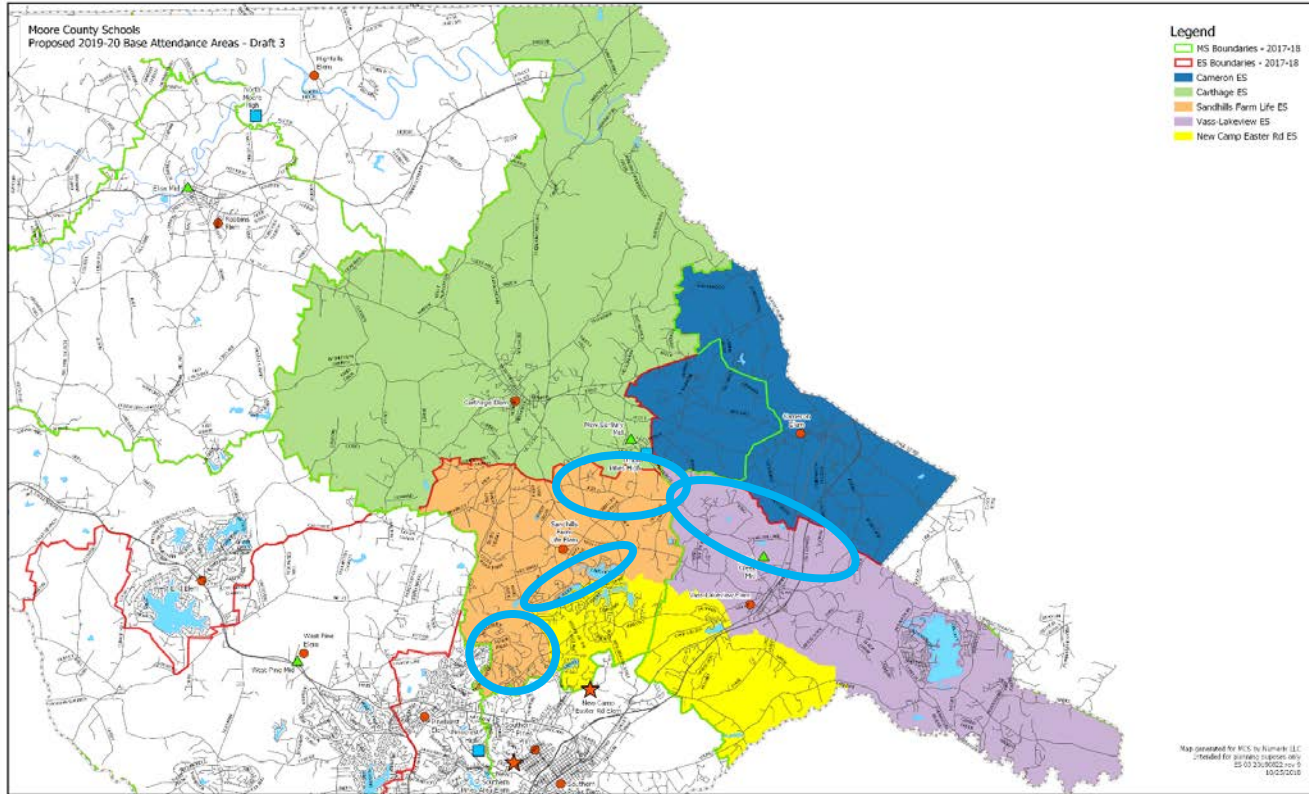
- Legend
- MS Boundaries - 2017-18
 - ES Boundaries - 2017-18
 - Cameron ES
 - Carthage ES
 - Sandhills Farm Life ES
 - Vass-Lakeview ES
 - New Camp Easter Rd ES

2019-20 School Assignment Plan for Sandhills Farmlife, Vass-Lakeview & McDeeds Creek elementary schools.

McDeeds Creek capacity will be 800 and projected enrollment will be 459 in 2019-20.

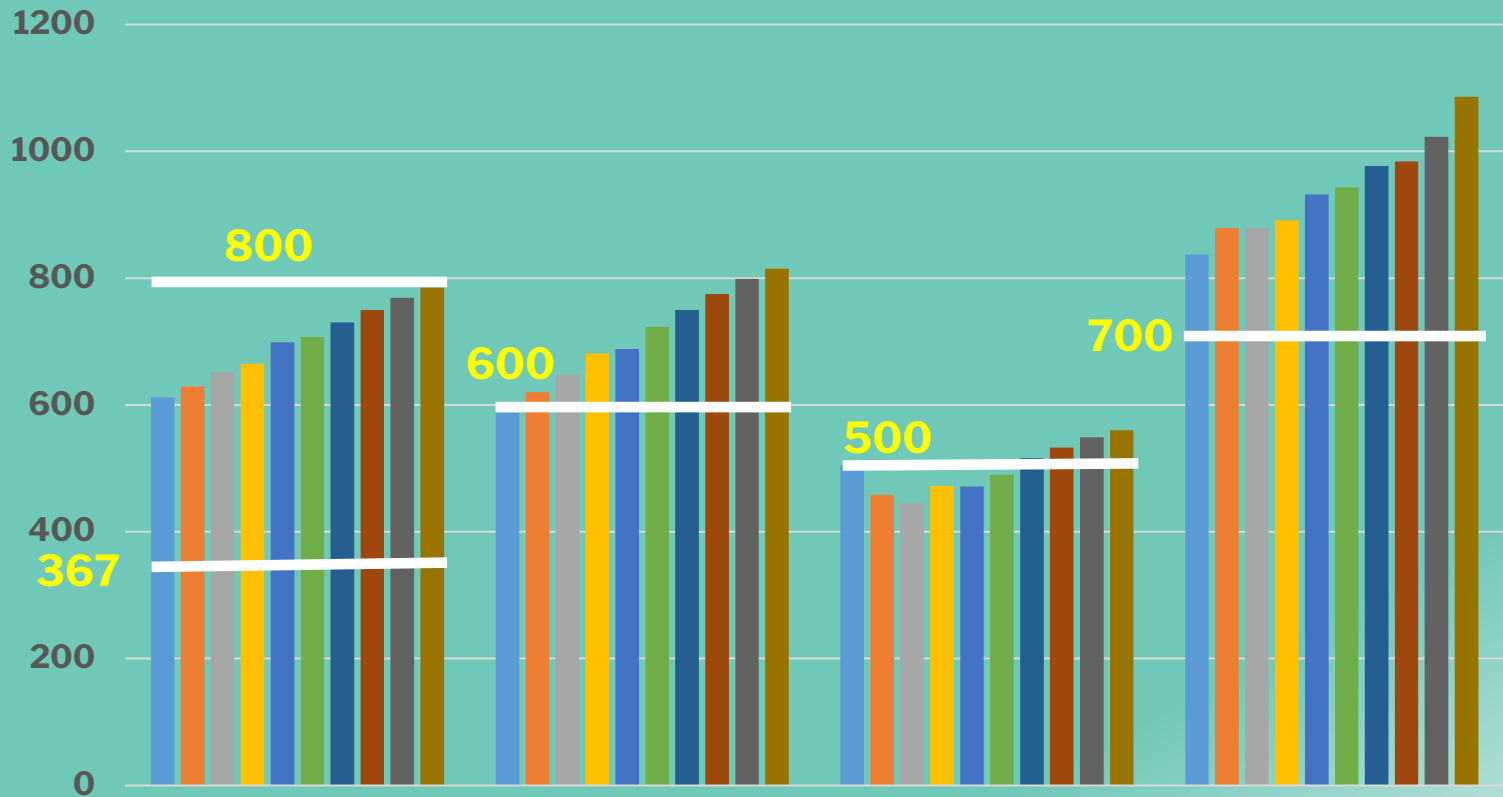


Area 1 Unfinished Business



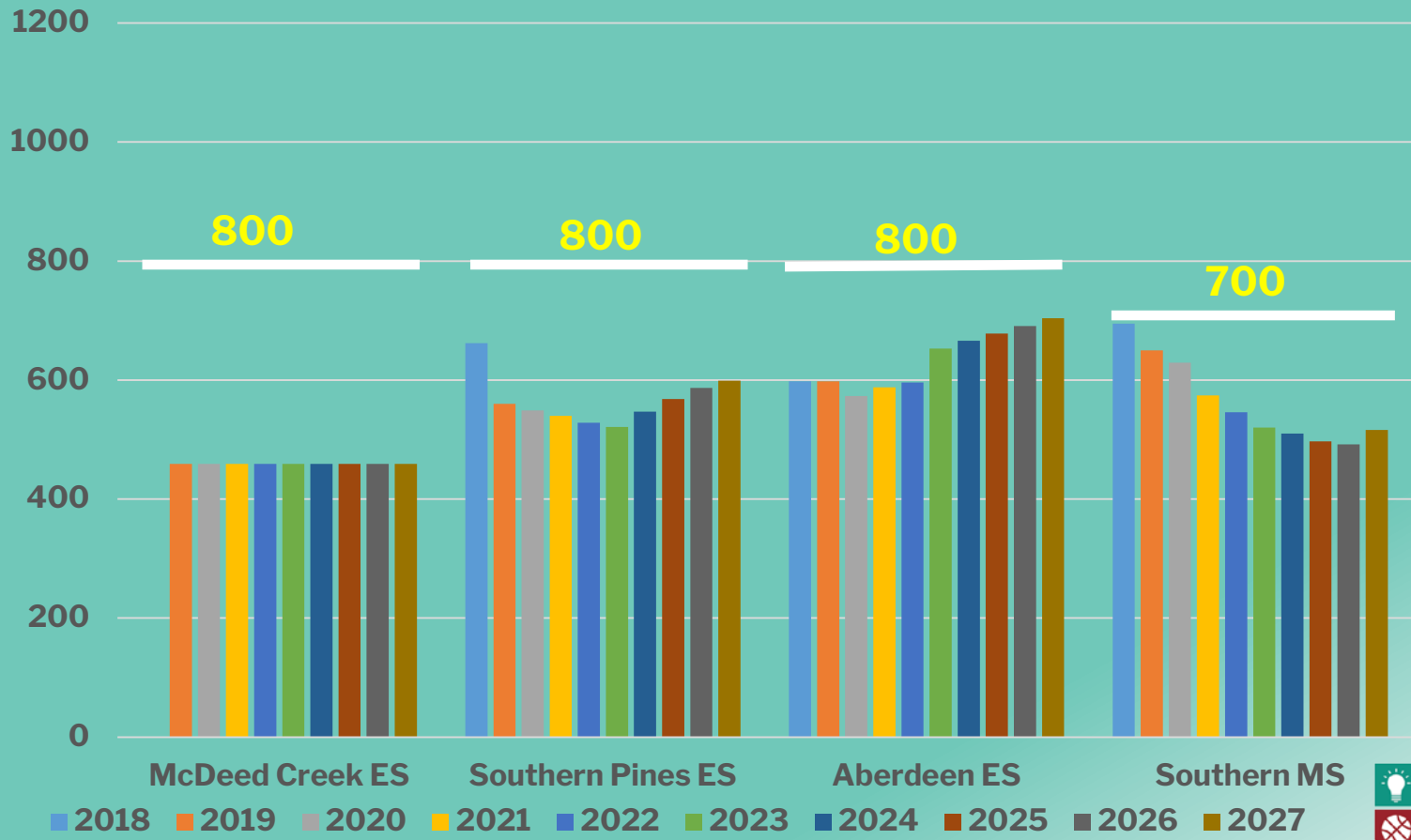
NOTE: All information presented here, including maps and data tables, represents base assignment scenarios that are not approved by the MCS Board of Education. All information presented here is intended for planning purposes only.

Key School Capacity Projections / 2018-2027

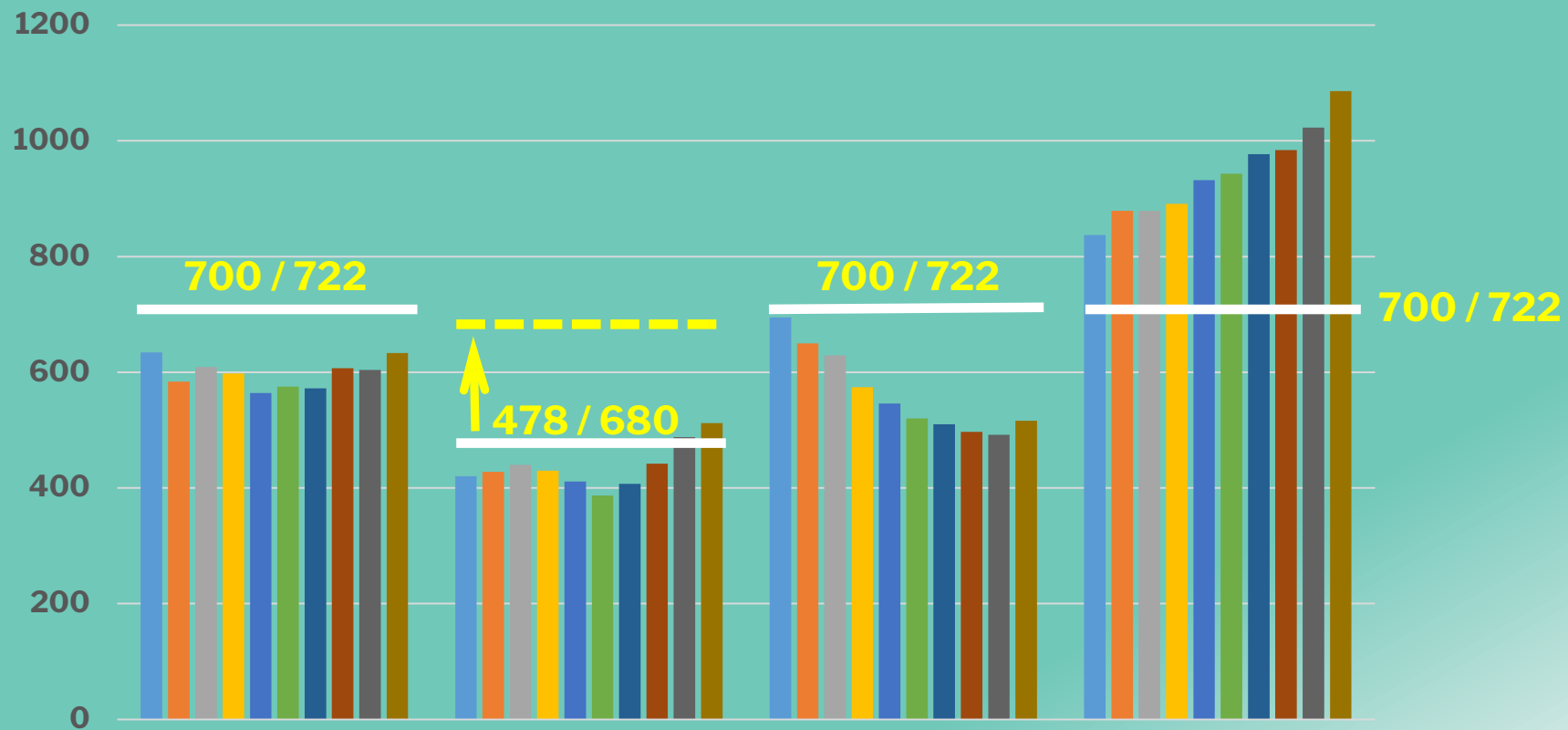


■ 2018
 ■ 2019
 ■ 2020
 ■ 2021
 ■ 2022
 ■ 2023
 ■ 2024
 ■ 2025
 ■ 2026
 ■ 2027

Key School Capacity Projections / 2018-2027



Key School Capacity Projections / 2018-2027



■ 2018
 ■ 2019
 ■ 2020
 ■ 2021
 ■ 2022
 ■ 2023
 ■ 2024
 ■ 2025
 ■ 2026
 ■ 2027

Area 1 / Union Pines HS Feeder Area

“Unfinished Business”

- McDeeds Creek ES only at 65% utilization in 2019-20. Offers capacity for 150+ more students.
- Crain’s Creek and New Century middle schools offer capacity for 100+ students from Pinecrest feeder area...via McDeeds Creek?
- Cameron ES has capacity for 110+ more students.
- Vass-Lakeview ES utilization (84%) will need attention soon.
- Could Sandhills Farm Life ES benefit from more “transfers out” based on longer-term future growth?
- What role can Carthage ES play as a “hub of the wheel?”

Area 2 / North Moore HS Feeder Area

Declining enrollment requires action.

- All school facilities in reasonably good shape with exception of need for modernization at North Moore High School and gyms at Highfalls and Westmoore.
- Five-year enrollment decline includes:
 - Robbins ES = -10%
 - Highfalls K-8 = -14%
 - North Moore HS = -17%
 - Westmoore K-8 = -20%
- North Moore schools offer available capacity.

Area 3 / Pinecrest HS Feeder Area

New elementary schools require rethinking.

- New McDeeds Creek ES offers second Southern Pines elementary. May pull elementary enrollment eastward;
- Larger elementary schools in Southern Pines, Aberdeen and Pinehurst may offer relief to over-crowded West Pine ES;
- Moving some West Pine ES eastward may offer relief to rapidly growing enrollment at West End ES; and
- Severe utilization and demographic imbalances between West Pine MS and Southern MS feeder patterns require attention.

Patriot Unity Rising

Pinecrest High School, 2013-2018



Patriot Proficiency Rising

	2013-2014	2017-2018	Trend	State of North Carolina
Biology	50.5	67.4	+16.9	58.3
English II	59.6	67.5	+7.9	59.8
Math I	40.1	64.2	+24.1	57.4
Overall EOC	49.9	66.3	+16.4	58.5

Patriot Achievement Rising

	2013-2014	2017-2018	State of North Carolina
Academic Growth	Met	Exceeded	*
School Performance Grade	69 (C)	79(B)	*
Graduation Rate	89.6%	87.5%	86.3%

Patriot Respect Rising

Number of Incidents	2013-2014	2017-2018	Trend
Reportable Offenses/Major Offenses: (weapons, assault, alcohol, drugs, bomb threat, serious injury)	46	25	-46%

Patriot Respect Rising

	2016-2017	2017-2018	Trend
Total Out of School Suspensions	217	176	-19%

Pinecrest received a state PBIS “Green Ribbon” for the faculty’s commitment to promoting student self-governance and positive decision-making.

Patriot Career Readiness Rising

	2015-2016	2016-2017	2017-2018	3-Year Total
CTE Credentials Earned:	264	496 +88%	1067 +304% / +115%	1827
CTE Concentrators:	120	136	135	391

Patriot College Readiness Rising

	2013-2014	2017-2018	Trend
Sandhills Community College Enrollment (Unique Students)	163	386*	+136%
Total College Credits Earned	253	824	+226%

* 386 students represented 37% of all Pinecrest juniors and seniors during 2017-18.

Patriots Rising in CTE



Pinecrest HS students are demonstrating greater success in our Career and Technology Programs.

At the NC FFA State Vet Science Career Development Event, Pinecrest HS placed **FIRST** at the state level and will be competing at the National FFA Convention!

Patriots Rising in Junior ROTC



Corps has grown to 118 active cadets who..

- Train Pinehurst and Aberdeen elementary students in flag etiquette and to raise the flag on their own;
- Chaperone the West End Elementary dance, representing the program in official attire;
- Support the Prancing Horse ceremony by serving meals, direct parking, provide clean-up and serve as dance partners for special needs children;
- Clean Woodlawn Cemetery three times per year and place flags on the graves of veterans;
- Support the VFW “Toys for Tots” program;
- Participate in all local parades, providing the official color guard for the Taylortown Parade;
- Support the annual Pinehurst tree lighting festival by painting faces, providing crafts and serving hot chocolate and cider; and
- Provide support services for the annual First Health Youth Triathlon.

Patriots Rising in the Arts

Marching Patriots

- Marching Patriot Percussion-Grand Champions at all 5 competitions in 2018.
- Marching Patriots-All Superior ratings for 2018.

Chamber Ensemble

- One of only three choirs invited to perform at annual NCMEA conference in Winston-Salem.
- Six students achieved North Carolina Honors Chorus.
- Voted “Best of The Pines” for Best Local Choir.

Orchestra

- Growth to three orchestras: Freshmen, Concert and Sinfonietta.

Pinecrest Players

- 2018 NCTC State Festival: Spirit Award; Excellence in Design and Production in Stage Management and Costumes; Excellence in Acting; and Excellence in Ensemble Performance.
- Voted “Best of The Pines” for Best Live Theater.



Patriots Rising in Athletics

- Girls volleyball - All conference
- Spring 2018 - Girls soccer SAC Champs
- November 2018 - NCHSAA Performance of the week - running fastest time ever for a woman at State Cross Country Championship - AA Women's Cross Country Individual (Carmen Alder)
- Men's - Women's Golf - Multiple State Championship Titles
- Spring 2018 - PHS Women Runners ranked 26th and came in 3rd place at New Balance Nationals
- March 2016 - Girls 4x1,600 meter relay team broke the school record
- Fall 2018 - first Cheerleading Competition



Patriots Rising in Athletics

November 2018

- *Having adopted the theme of ‘Unity,’ the Patriots’ football team advances to semifinal (“final four”) round of the Group 4AA playoffs for first time in school history.*
- *Head Football Coach Chris Metzger is named U.S. Cellular National High School Most Valuable Coach after unprecedented community-wide support.*



Patriots Rising in Service

- Operation Christmas
- Food Collections
- Road-Side Trash Pick-Up
- Habitat for Humanity
- Adopt-a-Highway Roadside Cleanup
- Pinecrest Players mentee/mentor program with Southern Middle School
- Football players serve as readers in elementary schools
- “No Student Eats Lunch Alone”



Patriot Unity Arises: The Campus Blossoms

Community and School worked together
to overhaul landscaping...

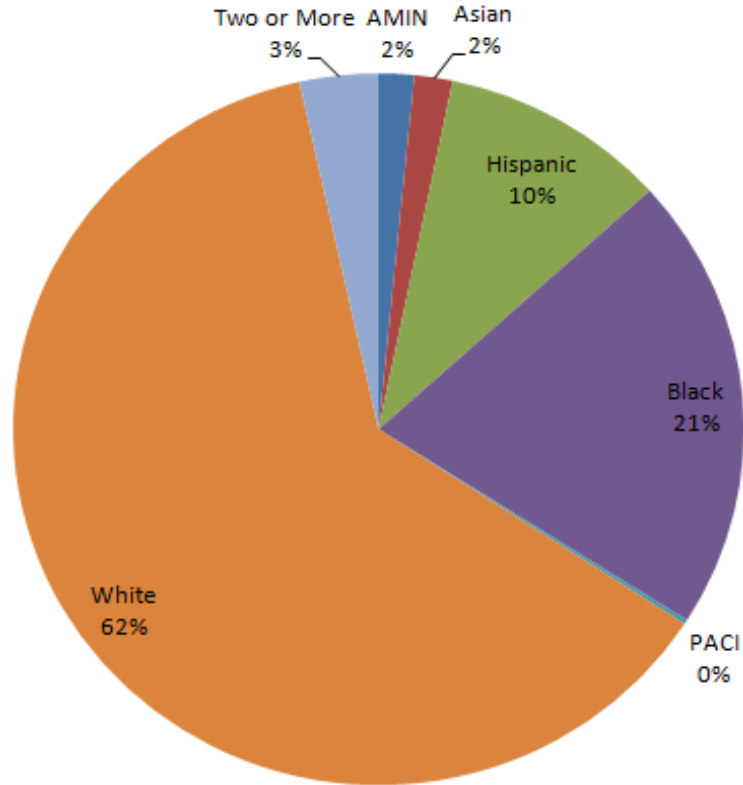
- 150 Students
- 10 Parent and Teacher Volunteers
- 5 Nurseries
- 4 Garden Clubs
- 2 Master Gardeners
- 1 Horticulture Class
- 1 Landscape Management class



Patriot Unity Inspires Our Entire Community!



Pinecrest High School Demographics



***Patriot
Unity
Is Fueled
By
Diversity***

“The Two Creeks That Feed the River”

Southern Middle School

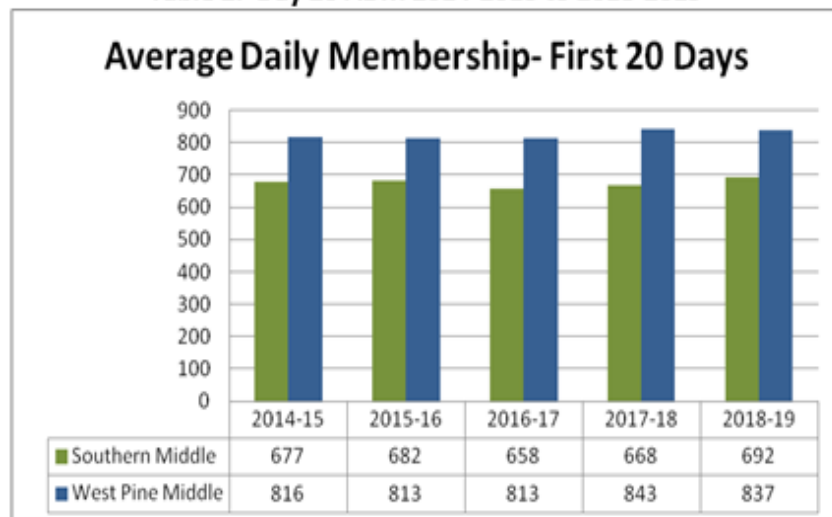
West Pine Middle School

***GOLD is the color that binds our
Pinecrest area secondary schools!***

Average Daily Membership

The state uses Day 20 Average Daily Membership for the vast majority of their reports. This data is pulled from the Principal's Monthly Report-Month 1 Revised (PMR1R).

Table 2. Day 20 ADM 2014-2015 to 2018-2019



West Pine Middle school is currently the 3rd largest school in the county; Southern Middle School is the 5th largest. The average daily membership at both schools has remained relatively steady over the past five years, with both seeing a moderate increase in population during that time.

Area 3 Middle School Free and Reduced Lunch Patterns

Current Array of Middle School Students / 2018-2019

	ADM	Free	Reduced	F&R %
Southern Middle School	684	367	45	60%
West Pine Middle School	847	162	32	23%
Sub-Total	1531	529	77	40%
50% of Sub-Total	766			



**37-point
difference**

Ideal?

Area 3 Elementary Free and Reduced Lunch Patterns

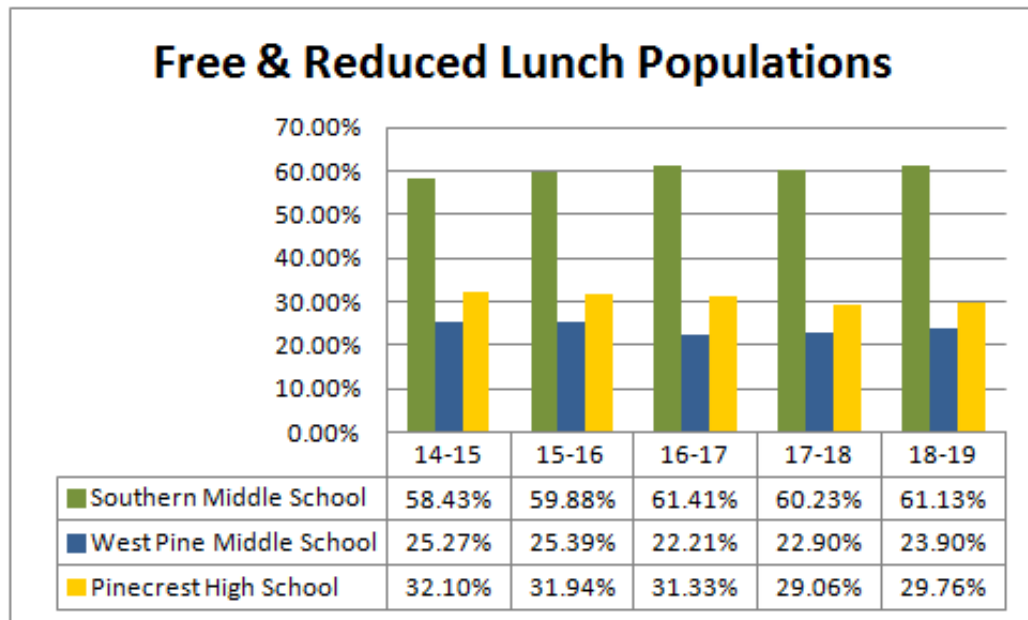
Current Array of Elementary Students / 2018-2019				
	ADM	Free	Reduced	F&R %
Aberdeen Primary	319	223	28	79%
Aberdeen Elementary	338	215	35	74%
Southern Pines Primary	348	200	4	59%
Southern Pines Elementary	357	197	10	58%
Sub-Total	1362	835	77	67%
50% of Sub-Total	681			
Pinehurst Elementary	594	84	14	16%
West End Elementary	467	129	25	33%
West Pine Elementary	555	175	29	37%
Sub-Total	1616	388	68	28%
50% of Sub-Total	808			



**39-point
difference**

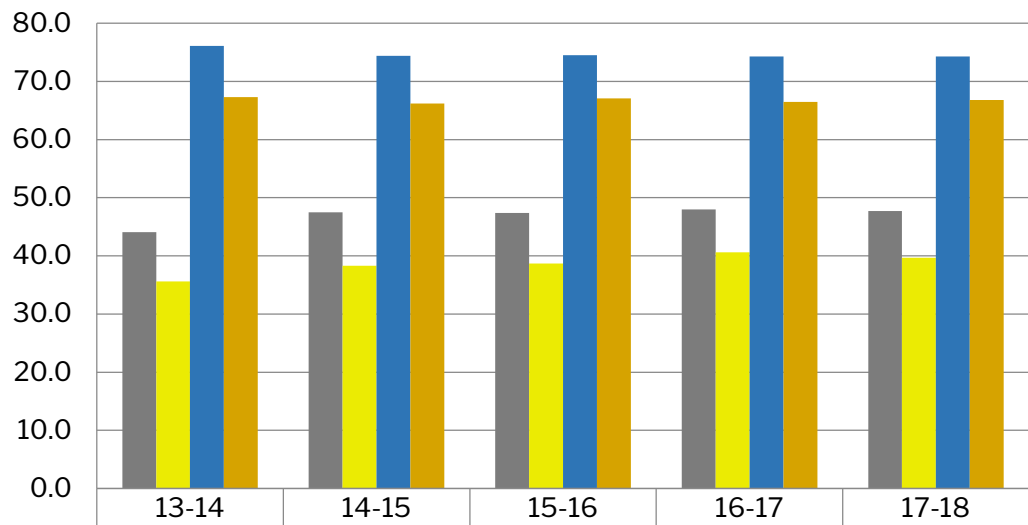
Free & Reduced Lunch Populations

The percent of student population receiving free and reduced lunches (FRL) has also remained relatively steady over the past five years at both schools. Due to data collection issues, the FRL demographics are from various points throughout the school year, but FRL populations do not vary much throughout the school year.



Southern Middle School has a 5-year average FRL population of 60.22%. West Pine Middle has a 5-year average FRL population of about 23.92%.

All Subject School Proficiency



■ Southern Middle-GLP	44.1	47.5	47.4	48.0	47.7
■ Southern Middle- CCR	35.6	38.3	38.7	40.6	39.7
■ West Pine Middle-GLP	76.1	74.4	74.5	74.3	74.3
■ West Pine Middle- CCR	67.3	66.2	67.1	66.5	66.8

Proficiency parallels poverty rates very closely.

2017-18	
FRL	37 points
GLP	27 points
CCR	27 points

“1 proficiency point for each 1.4 points of poverty.”

EVAAS School Composite Growth Score

	2012-13	2013-14	2014-15	2015-16	2016-17	2017-18
Southern Middle	Met	Not Met	Not Met	Not Met	Met	Not Met
West Pine Middle	Exceeded	Met	Not Met	Not Met	Not Met	Met

The middle school academic growth rates are more similar than different.

EVAAS School Composite Growth Score

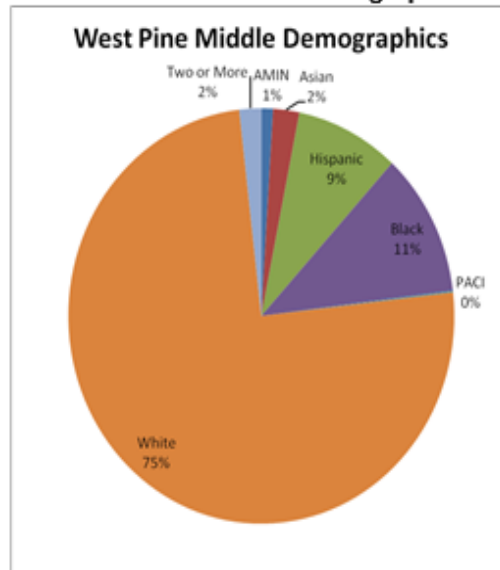
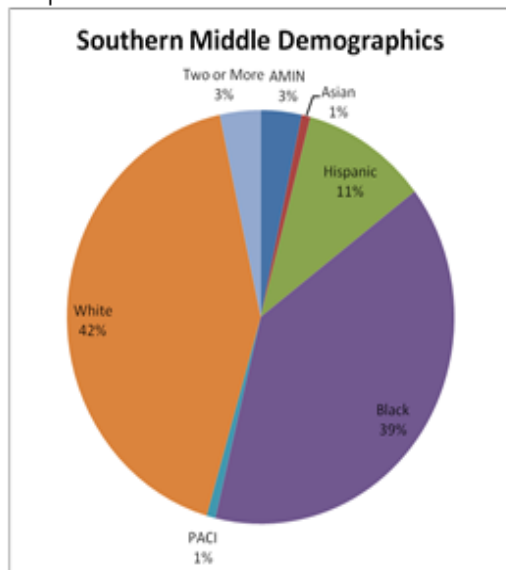
	2012-13	2013-14	2014-15	2015-16	2016-17	2017-18
Southern Middle	Met	Not Met	Not Met	Not Met	Met	Not Met
West Pine Middle	Exceeded	Met	Not Met	Not Met	Not Met	Met
Pinecrest High School	Met	Not Met	Met	Met	Met	Exceeded

More balanced income and racial diversity at Pinecrest does not inhibit academic growth. In fact, the Pinecrest Student Unity Forum suggested diversity might contribute to academic growth.

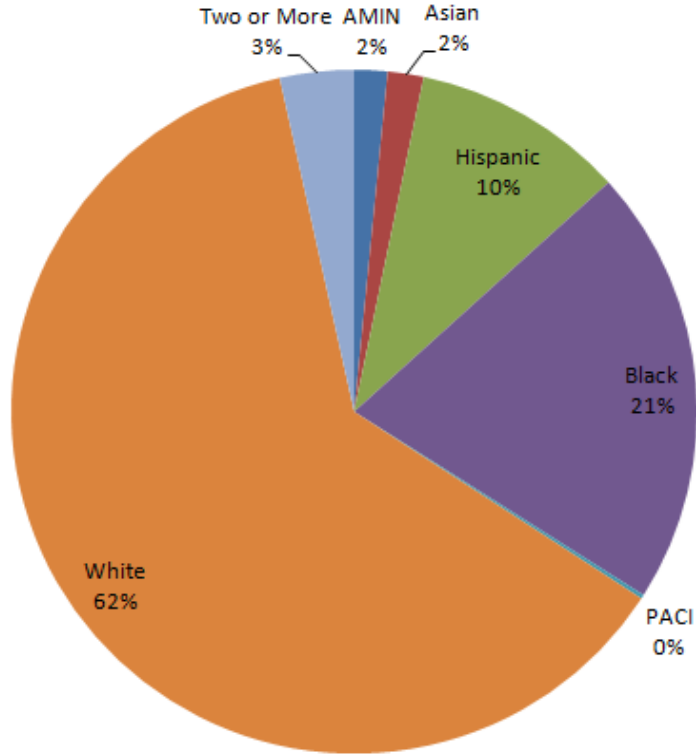
Demographics

Each school reports their demographics through the Principal's Monthly Reports. In line with the data that the Department of Public Instruction uses, we have used Principal's Monthly Report-Month 1 Revised (PMR1R).

Table 1. Southern Middle & West Pine Middle Schools 2018-2019 Demographics



Pinecrest High School Demographics



***Pinecrest
High School:***

***Where
Diversity and
Academic
Achievement
are a
Natural Fit!***

How to Stay Involved

- Attend or view School Board work sessions.
- Monitor School Board meeting link on MCS web site.
- Attend community forums in February through May.
- Attend public hearing in September.
- Attend your school's parent advisory committee meetings.
- Communicate with your representative on the district school assignment plan advisory committee.
- Communicate with your School Board representative.

Audience Engagement

Submit questions and comments to PTA representatives.

- Questions
- Clarifications
- Expectations
- Perceptions
- Feedback / Input / Suggestions
- Worries / Concerns
- Compliments?